



Wide-Range Input Voltage, Small Foot Print



25 Watt BTF Series

Small Size Single Output DC-DC Converters/BTF 25Watt Series
5th Generation, Ultra Small Size, Isolated Type DC-DC Converter

Input: 24V

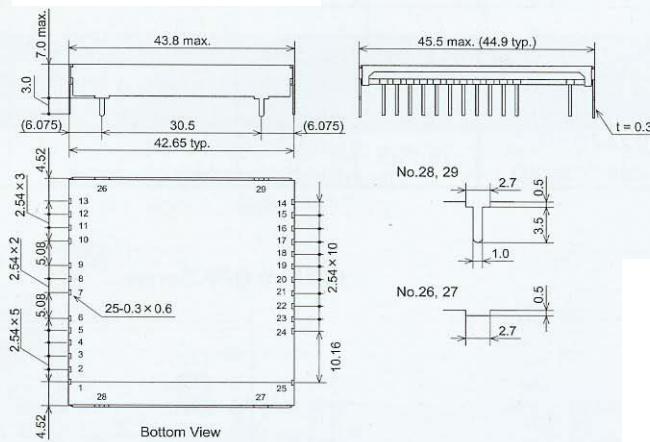
Output: 3.3V, 5V

- A High Efficiency of 90%
- with ON/OFF Control Function
- Insulation Durability AC500V
- Over Current Protection Circuit built-in
- Low Input Voltage protection function built-in
- Over Input Current Protection component built-in
- No electrolytic or tantalum capacitor used
- with Metallic Shield cover
- Primary-secondary coupling capacitor: Approx. 230pF
- Operating Temperature: -40°C to +85°C
- RoHS compliant

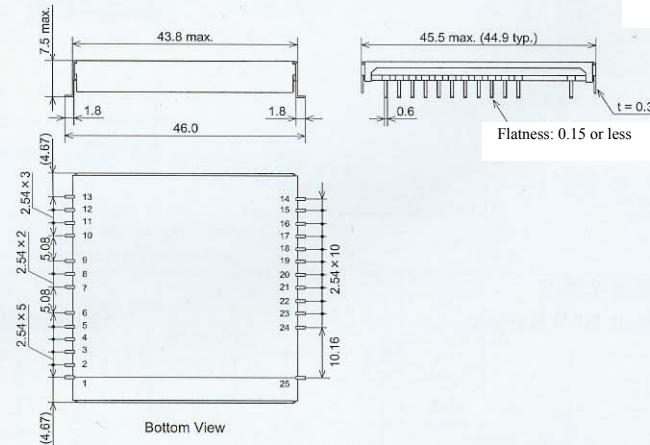
型名 Models BTF Series	入力電圧 Input V Vdc	出力電圧 Output V Vdc	出力電流 Output I A	入力変動 Line Reg. mV(max.)	負荷変動 Load Reg. mV(max.)	リップルノイズ Ripple Noise mVpp(typ.)	効率 Efficiency %(typ.)
BTF24-03S750□	18~36	3.3	0~7.5	65	120	40	90
BTF24-05S500□		5	0~5.0	100	200		90

Note: When placing an order, please substitute "D" or "P" for "□" to specify the package type.
Example) DIP type BTF24-05S500D, SMD type BTF24-05S500S

□ Dimensions (DIP type)



□ Dimensions (SMD type)



BTF-S Series

pin	Function	Pin	Function	Pin	Function
1	NC	11	+Vin	21	-Vout
2	NC	12	+Vin	22	-Vout
3	NC	13	NC	23	-Vout
4	ON/OFF	14	NC	24	-Vout
5	NC	15	+Vout	25	NC
6	NC	16	+Vout	26	Stand off
7	-Vin	17	+Vout	27	Stand off
8	-Vin	18	+Vout	28	Case connect
9	-Vin	19	-Vout	29	Case connect
10	+Vin	20	-Vout		

*Pins #26 to #29 for DIP type only

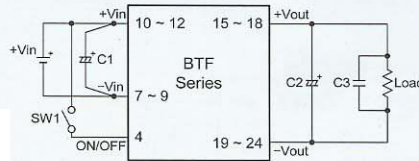
Note: This catalogue only presents general descriptions on the products. Please refer to the relevant data sheet when designing a system

Maximum tolerable errors for dimensions: ±0.5 unless otherwise is mentioned

Lengths in mm

□ Standard configuration

SW1:
Open=Output ON
Short=Output OFF



C1=220 μF / C2=47 μF / C3=1 μF

-There are capacitance limitations for the External capacitors. Refer to data sheets for details.

絶縁型DC-DC Isolated DC-DC